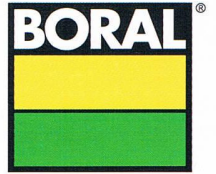


BORAL Impactstop
Build something great™



Impactstop

High Impact Resistant

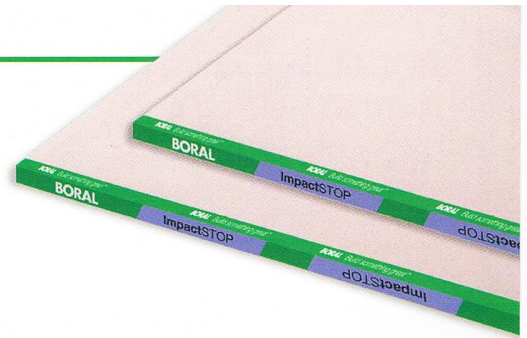


Today's designers no longer need to compromise when considering light weight, fire and high impact resistant solutions for high traffic buildings such as medical, educational or high rise residential. The unique feature of this system is its ability to withstand damage caused by impact from various objects.



BORAL Impactstop

BORAL Impactstop is specially developed as an interior lining for areas which require high impact resistance in commercial, industrial, institutional and residential application. The unique feature of BORAL Impactstop is its ability to withstand damaged caused by impact from various objects.



Product Data

Thickness	Metric (mm)	19mm
Edge Details:	Recessed Edge	Yes
Width (mm):	1220	
Length (mm):	2440	
Weight:	19mm = 16.20kg/m ²	
Product Testing:	BS 476 part 4 / part 22, BS 5234 part 2	

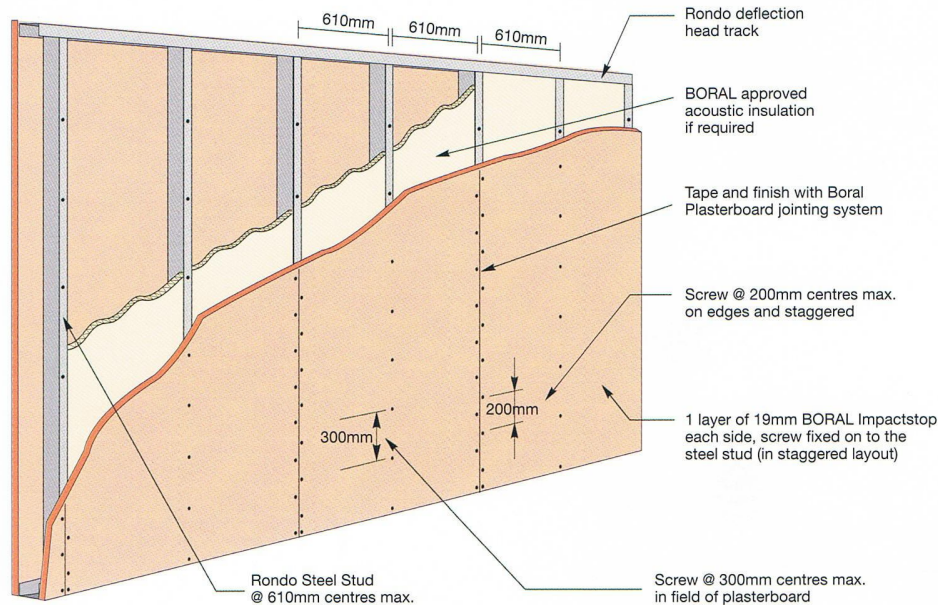
• The above lengths are standard sizes, Boral Plasterboard is able to produce any required sheet length depending upon the order size.

How to specify this product:

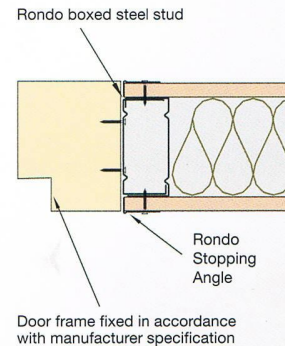
Supply and install BORAL Impactstop 19mm as shown on the relevant drawings. BORAL Impactstop must be installed and finished in accordance to manufacturer's specification.

For more information, please contact our technical service.

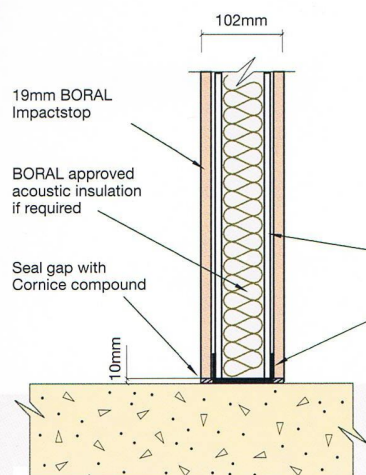
BORAL Impact Wall Partition - 1 Hour Fire Rating



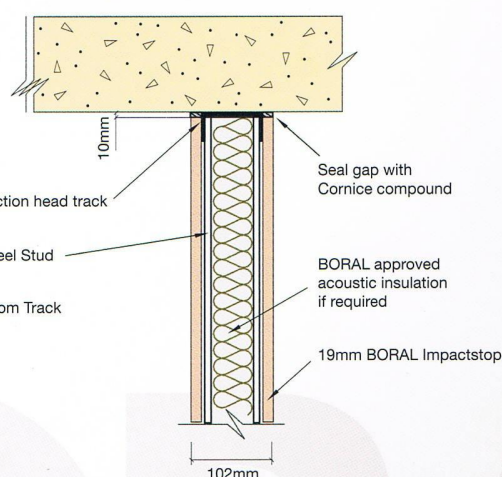
Door Jamb Details



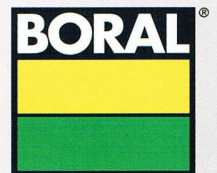
Floor Junction Details



Ceiling Junction Details



Note: Not recommended for external use.



**Boral Plasterboard
(Malaysia) Sdn Bhd**